



**GRTL INDIA LLP**  
CALIBRATION TO PRECISION EQUIPMENT'S

# Strengths of the GRTL India LLP

Calibration to Precision Equipment's

In the **GRTL India LLP** calibration laboratory, the team calibrates your equipment independently of the manufacturer and with the lowest possible measurement uncertainties.

ISO/IEC 17025:2017

National Accreditation Board for Testing and  
Calibration Laboratories (NABL)

Certificate No. CC-3892





## About us

**GRTL INDIA LLP** Calibration Laboratory comprises of the team of Technocrats having the expertise in the various domain of the industries/ Laboratory/Govt Sector Etc..... The core Team involved has entered into the segment of calibrating the **PRECISION INSTRUMENTS** pertaining to the Pressure, Temperature, Humidity and Electro-Technical Masters which are used by many corporate Companies and laboratories in the vicinity. The purpose of floating the laboratory is to extend the services of Precision Calibration to all the customers across the PAN India, so that they will have one stop solution for Calibration.

The Electrical Sourcing and Measurement masters for various Electrical parameters ACV, ACI, DCV, DCI, Resistance, Inductance, Temperature Simulation, Time & Frequency, Power Parameter & Capacitance Calibrated against the **PRIMARY STANDARD** at our end and providing the traceability with the Deemed fit CMC.



## WHY CHOOSE GRTL India LLP

### Our Advantages

In our permanent calibration laboratory in Vapi, you can benefit from our complete range of measurands. mechanical, thermodynamic and electrical measurands, all in one place, all from one source. Here, the highest calibration requirements as well as the lowest measurement uncertainties are met as your requirements.

### Your Advantages:

- Benefit from an impressive variety of measurands
- Calibration under controlled environmental conditions with high-quality standards
- Efficient workflows guarantee short turnaround times, so that your recalibrated test equipment is ready for use again within the shortest possible time.

### Reaching the goal with the right strategy

- Arrange appointment
- Transport of the measuring equipment
- Start of the calibration work
- Creation of the calibration certificate
- Return after calibration



The precision calibration includes the following:

**a) Pressure Discipline**

- i) Calibration of all the **Digital Master Pressure Gauges** used by the laboratories in the range of Vacuum, Pneumatic and Hydraulic using the primary standards by **Comparison Method**.
- ii) The Dead weight Tester both pneumatic and Hydraulic can be calibrated using the **Cross-float Method**. (All Ranges from 1 bar to 70.0 bar in Pneumatic mode and 1 bar to 1100 bar Hydraulic mode)

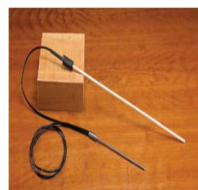


**b) Thermal Discipline**

- i) The Temperature Standards i.e. 4 wire RTD Sensors comprising of Class A Sensor, 1/3<sup>rd</sup> DIN, 1/5<sup>th</sup> DIN and 1/10<sup>th</sup> DIN Sensor with or without Indicator. (All The Ranges at **single point -95 °C to 660 °C**)
- ii) The High Temperature Masters Viz. **S-Type, R-Type Thermocouples** with or without indicator. (The range of calibration will be from **300 °C to 1200 °C**).

**c) Specific Heat and Temperature**

- i) The Humidity Sensors with or without Indicator with the range from 10 % rh to 95 %rh @ 25 °C and temperature calibration from 5 °C to 50 °C.



**d) Electro-Technical**

The Electrical Sourcing and Measurement masters for various Electrical parameters ACV, ACI, DCV, DCI, Resistance, Capacitance, Inductance, Power, Power factor can be calibrated against the **PRIMARY STANDARD** at our end and providing the traceability with the Deemed fit CMC.

We undertake calibration of all Types of Multifunction Calibrator & Multimeter



### Exclusive services

We develop customised customer solutions based on a broad portfolio of services.

○ Dimensional Precision Equipment's

- ✓ Slip Guage Set **up to 100mm**
- ✓ Caliper Checker /Check Master **up to 1000mm**
- ✓ Length Bar / Long Slip Guage **up to 1000mm**
- ✓ Dial Calibration Tester **up to 25mm**
- ✓ Universal Length Measuring Machine
- ✓ Tape & Scale Calibrator **up to 1000mm**
- ✓ Surface Plate **up to 5000X5000mm**
- ✓ Profile Projector / Microscope **up to 400mm**
- ✓ Video Measuring Machine **up to 300mm**
- ✓ Anguler Glass Graticule **up to 360°**
- ✓ Optical Flat/ Parallel **up to 100mm**
- ✓ Parrallel Mandrel **up to 100mm**
- ✓ Single Axis Measuring M/C **up to 1000 mm**
- ✓ Depth Micro Checker **up to 600mm**
- ✓ Roughness tester / Masters
- ✓ Electronic Oribe with DRO **up to 25mm**
- ✓ Floating Carriage **up to 200mm**
- ✓ Glass Scale **up to 300mm**
- ✓ Angle Gauge **up to 90°**
- ✓ 3-D Co-ordinate Measuring M/C **up to 1000mm**
- ✓ Electronic Level /Sprit Level **up to 600mm**
- ✓ Slip Gauge Calibrator **up to 100mm**
- ✓ Thread Measuring Wires **up to 7mm**
- ✓ Cylindrical Setting Master **up to 100mm**

○ Mass & Balance

- ✓ Weight Box (E1 Class & Coarser)
- ✓ Master Weighing Balance (Class I & Coarser)

○ System & Technical Training conductec

- ✓ Uncertainty Measurements
- ✓ NABL Documents
- ✓ Workshop Training
- ✓ Implementation of Laboratory Quality Management System
- ✓ **For More details contact to GRTL India LLP.**

## Importance of Accreditation

### Accreditation creates trust

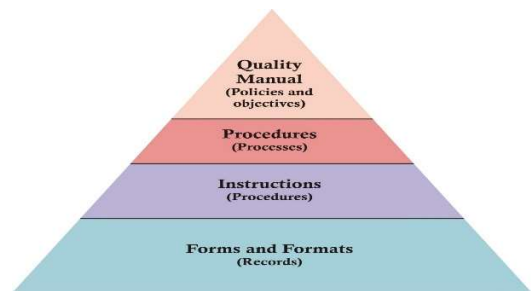
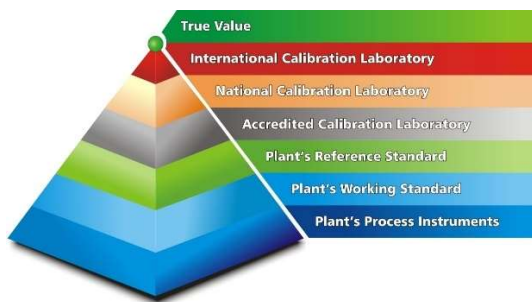
ISO/IEC 17025 is the globally valid standard for laboratory accreditation in the field of testing and calibration. It sets out general requirements for competence, impartiality and for the uniform operation of laboratories and is applicable to all organisations that carry out laboratory activities.

The quality of all our services and the highest possible satisfaction of our customers are the focus of our daily work. Basic principles, such as the performance of calibrations in consistently high quality, are a prerequisite for all activities of the laboratory.

You can view the current annex to the accreditation certificate and the measurement parameters in the flexible scope of application [here](#)

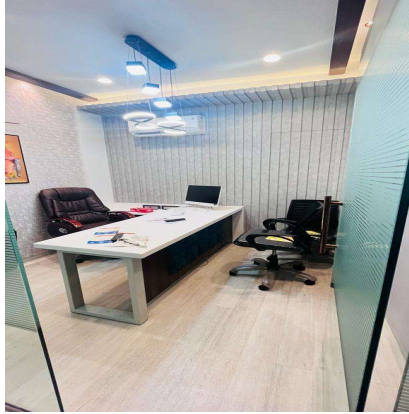
### Here is how the calibration process works:

- **Initial Assessment:** The **GRTL India LLP** calibration team conducts a thorough inspection of the instrument. They use their 2-decade years of experience to identify any signs of deviation from standards.
- **Adjustment:** If the device proves out of specs, **GRTL India LLP** issues a quotation for adjustment upon customer's request. Using advanced equipment and expertise, the instruments are adjusted and fine-tuned to align with known standards.
- **Verification:** Once adjustments are made, the device undergoes a second calibration and the results are documented. This final verification step ensures that the instrument meets the stringent accuracy criteria before it is returned to the customer.
- **Calibration Certificate:** Upon successful calibration, **GRTL India LLP** calibration laboratory provides a detailed calibration certificate as a digital version. This certificate serves as tangible evidence of the instrument's accuracy and compliance with industry standards.





**GRTL INDIA LLP**  
CALIBRATION TO PRECISION EQUIPMENT'S



## GRTL India LLP

### Laboratory Address

**Office NO. B219, B205 & B206, 2<sup>nd</sup> Floor, M cube The Business Hub,  
Opposite Taluka Seva Sadan, Balitha, Vapi 396195 Gujarat, INDIA**

**Contact No. 6355596533/9825317475**

Mail Id: [grtlindia22@gmail.com](mailto:grtlindia22@gmail.com) / website: [www.grtlindia.com](http://www.grtlindia.com)

GSTIN No. : 24ABAFG4189M1Z3

☎ 6355596533/9825317475

✉ [grtlindia22@gmail.com](mailto:grtlindia22@gmail.com)

📍 219/205/206, 2nd Floor, B - Wing M Cube, The Business Hub,  
Opp. Taluka Seva Sadan, Balitha, Vapi - 396195, Gujarat (India)

